

MIDLAND METAL MFG.

Fittings, Valves, Clamps & Accessories for Hose, Pipe and Tube

MARINE - 2015

ITEMS MOST OFTEN PURCHASED BY MARINE CUSTOMERS

PIPE

90° FEMALE ELBOW



Part #	Size	List Price
28-001	1/8"	2.99
28-002	1/4"	4.55
28-003	3/8"	5.95
28-004	1/2"	8.56
28-005	3/4"	17.69

45° FEMALE ELBOW



Part #	Size	List Price
28-018	1/8"	4.69
28-019	1/4"	6.13

UNION TEE



Part #	Size	List Price
28-024	1/8"	3.38
28-025	1/4"	4.99
28-026	3/8"	7.60
28-027	1/2"	12.23
28-028	3/4"	23.81

COUPLING



Part #	Size	List Price
28-058L	1/8"	0.88
28-058	1/8"	1.88
28-059L	1/4"	1.32
28-059	1/4"	3.03
28-060	3/8"	3.97
28-061L	1/2"	4.00
28-061	1/2"	6.30
28-062	3/4"	15.87

REDUCING COUPLING



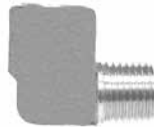
Part #	Size	List Price
28-181	1/4" x 1/8"	2.71
28-185	1/2" x 3/8"	9.21

CAP



Part #	Size	List Price
28-075	1/8"	0.88
28-076	1/4"	1.83
28-077	3/8"	2.50
28-078	1/2"	4.00
28-079	3/4"	8.63

90° STREET ELBOW



Part #	Size	List Price
28-156	1/8"	2.20
28-157	1/4"	3.58
28-158	3/8"	5.06
28-159	1/2"	9.17
28-160	3/4"	17.58

90° STREET ELBOW



Part #	Size	List Price
28-167	3/8"	5.09
28-168	1/2"	7.63
28-169	3/4"	12.11

HEX BUSHING



Part #	Size	List Price
28-102L	1/4" x 1/8"	0.70
28-102	1/4" x 1/8"	1.12
28-103	3/8" x 1/8"	1.83
28-104L	3/8" x 1/4"	1.25
28-104	3/8" x 1/4"	1.98
28-105	1/2" x 1/8"	3.71
28-106L	1/2" x 1/4"	2.42
28-106	1/2" x 1/4"	3.44
28-107L	1/2" x 3/8"	1.75
28-107	1/2" x 3/8"	2.60
28-109L	3/4" x 1/4"	4.33
28-110L	3/4" x 3/8"	5.10
28-111L	3/4" x 1/2"	3.71
28-111	3/4" x 1/2"	4.98
28-114	1" x 1/2"	9.48
28-115	1" x 3/4"	7.44

FACE BUSHING



Part #	Size	List Price
28-117	1/2" x 3/8"	2.26

SQUARE HEAD PLUG



Part #	Size	List Price
28-084	1/8"	0.73
28-085	1/4"	1.15
28-086	3/8"	2.03
28-087	1/2"	3.13
28-088	3/4"	4.77

COUNTERSUNK HEX PLUG



Part #	Size	List Price
28-093	1/8"	0.84
28-094	1/4"	0.95
28-095	3/8"	1.23
28-096	1/2"	2.39
28-097	3/4"	4.20

PIPE

CORED HEX PLUGS



Part #	Size	List Price
28-201S	1/8"	1.60
28-202S	1/4"	1.68
28-203S	3/8"	3.13
28-204S	1/2"	3.31
28-205	3/4"	4.08

SOLID HEX HEAD PLUGS



Part #	Size	List Price
28-201S	1/8"	1.60
28-202S	1/4"	1.68
28-203S	3/8"	3.13
28-204S	1/2"	3.31

CLOSE NIPPLE



Part #	Size	List Price
28-131	1/8"	0.57
28-132	1/4"	1.07
28-133	3/8"	1.90
28-134	1/2"	2.20
28-135	3/4"	4.10

LONG NIPPLE



Part #	Size	List Price
28-140	1/8" x 1.5	1.42
28-144	1/4" x 1.5	1.97
28-145	1/4" x 2	2.18
28-148	3/8" x 1.5	2.53
28-152	1/2" x 1.5	2.71
28-153	1/2" x 2	4.19

HEX NIPPLE



Part #	Size	List Price
28-211L	1/8"	0.99
28-211	1/8"	0.99
28-212L	1/4"	1.27
28-212	1/4"	1.69
28-213L	3/8"	1.95
28-213	3/8"	2.67
28-214L	1/2"	3.38
28-214	1/2"	4.11
28-215	3/4"	7.69
28-216	1"	12.93

REDUCING HEX NIPPLE



Part #	Size	List Price
28-222	3/8" x 1/4"	2.50
28-224	1/2" x 3/8"	4.15
28-225	3/4" x 1/2"	5.83

45° STREET ELBOW



Part #	Size	List Price
28-230	1/8"	2.58
28-231	1/4"	3.43
28-232	3/8"	5.95
28-233	1/2"	9.09

STREET TEE/ MALE RUN TEE



Part #	Size	List Price
28-246	1/4"	6.12
28-247	3/8"	6.79
28-245	1/8"	2.58
28-248	1/2"	12.46
28-249	3/4"	20.03

BRASS FITTINGS

EXTENDER ADAPTER



Part #	Size	List Price
28-192	1/4" x 1/4"	2.99
28-194	3/8" x 3/8"	3.62
28-195	1/2" x 3/8"	6.99

COUPLINGS

BULKHEAD



Part #	Size	List Price
28-302	1/4-18 NPTF	7.92
28-303	3/8-18 NPTF	10.40

MALE BRANCH TEE



Part #	Size	List Price
28-282	1/4"	6.06
28-283	3/8"	7.99
28-284	1/2"	17.21

BRASS FITTINGS

HOSE BARBS

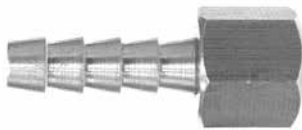
BRASS HOSE BARBS

RIGID MALE ADAPTER



Part #	Hose I.D. x Male NPTF	List Price
32-002	3/16" x 1/8"	0.94
32-001	1/8" x 1/8"	0.99
32-027	1/8" x 1/4"	1.36
32-003	3/16" x 1/4"	1.62
32-004	1/4" x 1/8"	1.19
32-005	1/4" x 1/4"	1.33
32-006	1/4" x 3/8"	1.98
32-007	1/4" x 1/2"	3.49
32-008	5/16" x 1/8"	1.12
32-009	5/16" x 1/4"	1.55
32-010	5/16" x 3/8"	2.07
32-390	5/16" x 1/2"	3.90
32-011	3/8" x 1/8"	1.45
32-012	3/8" x 1/4"	1.35
32-013	3/8" x 3/8"	1.88
32-014	3/8" x 1/2"	3.40
32-026	3/8" x 3/4"	4.55
32-015	1/2" x 1/4"	1.94
32-016	1/2" x 3/8"	2.19
32-017	1/2" x 1/2"	2.99
32-018	1/2" x 3/4"	4.54
32-303	1/2" x 1"	14.05
32-019	5/8" x 3/8"	2.59
32-020	5/8" x 1/2"	3.22
32-021	5/8" x 3/4"	4.47
32-305	5/8" x 1"	17.26
32-306	3/4" x 3/8"	5.65
32-022	3/4" x 1/2"	4.10
32-023	3/4" x 3/4"	5.39
32-316	3/4" x 1"	12.44
32-307	1" x 1/2"	7.52
32-024	1" x 3/4"	6.71
32-025	1" x 1"	10.18
32-028	1-1/4" x 1"	14.99
32-029	1-1/4" x 3/4"	15.77

FEMALE 45° FLARE SWIVEL



Part #	Hose I.D. x Female 45° Flare	List Price
32-105	3/8" x 3/8"	3.22

MENDER/ SPLICER



Part #	Hose I.D. x Hose I.D.	List Price
32-091	1/8"	1.30
32-092	3/16"	1.73
32-093	1/4"	1.44
32-094	5/16"	1.37
32-090	5/16" x 1/4"	2.41
32-095	3/8"	1.46
32-080	3/8" x 1/4"	3.98
32-096	1/2"	2.11
32-087	1/2" x 3/8"	5.66
32-097	5/8"	2.85
32-098	3/4"	4.84
32-089	3/4" x 1/2"	8.22
32-099	1"	12.16

RIGID FEMALE ADAPTER



Part #	Hose I.D. x Female NPTF	List Price
32-062	3/16" x 1/4"	5.40
32-053	1/4" x 1/4"	1.79
32-054	1/4" x 3/8"	2.53
32-056	5/16" x 1/4"	2.36
32-318	5/16" x 3/8"	5.47
32-058	3/8" x 1/4"	2.10
32-059	3/8" x 3/8"	2.30
32-063	3/8" x 1/2"	4.35
32-060	1/2" x 3/8"	5.25
32-061	1/2" x 1/2"	4.18
32-443	1/2" x 3/4"	14.91
32-445	5/8" x 1/2"	8.27
32-065	3/4" x 3/4"	7.14
32-049	1" x 3/4"	18.83

BARSTOCK HOSE BARB 90°



Part #	Hose I.D. x Male NPTF	List Price
32-309	1/4" x 3/8"	4.11
32-041B	3/8" x 1/4"	8.33
32-041B	3/8" x 1/4"	3.33

FORGED HOSE BARB 90°



Part #	Hose I.D. x Male NPTF	List Price
32-038	1/4" x 1/8"	2.40
32-039	1/4" x 1/4"	3.31
32-036	5/16" x 1/8"	2.93
32-040	5/16" x 1/4"	3.53
32-310	5/16" x 3/8"	6.31
32-046	3/8" x 1/8"	2.61
32-041	3/8" x 1/4"	3.33
32-042	3/8" x 3/8"	4.00
32-047	3/8" x 1/2"	4.28
32-048	1/2" x 1/4"	4.08
32-043	1/2" x 3/8"	4.70
32-311	1/2" x 1/2"	6.16
32-044**	5/8" x 3/8"	6.69
32-045**	5/8" x 1/2"	6.39
32-312	5/8" x 3/4"	10.90
32-313	3/4" x 1/2"	8.33
32-314	3/4" x 3/4"	13.36
32-330	3/4" x 1"	25.04
32-315	1" x 3/4"	12.29

HOSE BARB TEES



Part #	Hose Barb Size 1 x 2 x 3	List Price
32-365	1/4"	3.21
32-366	5/16"	3.99
32-126	3/8"	4.02
32-400	1/2"	4.88
32-361	5/8"	18.62

90° HOSE BARB ELBOW



Part #	Hose I.D. x Hose I.D.	List Price
32-416	3/8" x 3/8"	6.63
32-420	1/2" x 1/2"	5.56

BRASS

BRASS PUSH ON

MALE ADAPTER



Part #	Hose I.D. x Male NPTF	List Price
30-201	1/4" x 1/4"	1.93
30-213	5/16" x 1/4"	2.98
30-203	3/8" x 1/4"	2.20
30-204	3/8" x 3/8"	2.67
30-206	1/2" x 3/8"	2.79
30-207	1/2" x 1/2"	4.63
30-210	3/4" x 3/4"	7.77

HOSE SPLICER



Part #	Hose I.D.	List Price
30-301	3/8"	2.10
30-303	5/8"	7.34

MALE ELBOW



Part #	Hose I.D. x Male NPTF	List Price
30-372	1/4" x 1/8"	7.77
30-373	1/4" x 1/4"	7.50
30-375	5/16" x 1/4"	20.02
30-376	3/8" x 3/8"	5.40
30-378	1/2" x 1/2"	12.00

SAE/JIC DUAL 45°/37° SWV



Part #	Hose I.D. x Dual Seat	List Price
30-230	1/4" x 1/4"	2.32
30-234	1/2" x 1/2"	4.57
30-236	5/8" x 1/2"	8.62

45° SAE FLARE FEMAL SWV



Part #	Hose I.D. x 45° Female Flare	List Price
30-250	1/4" x 1/4"	2.45
30-252	3/8" x 3/8"	3.72
30-257	3/8" x 1/2"	17.96
30-255	1/2" x 1/2"	6.12
30-258	5/8" x 5/8"	10.30

FEMALE 37° JIC FLARE SWV



Part #	Hose I.D. x Female JIC	List Price
30-266	3/8" x 3/8"	3.47

FEMALE 37° JIC FLARE SWV



Part #	Hose I.D. x Male INV Flare	List Price
30-279	3/8" x 3/8"	5.18
30-282	1/2" x 1/2"	9.01
30-286	5/8" x 5/8"	18.28

BRASS FITTINGS

GARDEN HOSE

SWIVEL - FGH x FGH



Part #	FGH X FGH	List Price
30-011	3/4" x 3/4"	4.99

SWIVEL - FGH x FGH



Part #	FGH x Female NPTF	List Price
30-001	3/4" x 1/2"	5.61
30-006	3/4" x 3/4"	5.23

RIGID - FGX x FEMALE PIPE



Part #	FGH x Female NPTF	List Price
30-078	3/4" x 1/2"	4.10

RIGID - FGH x MALE PIPE



Part #	FGH x Male NPTF	List Price
30-088	3/4" x 1/2"(1/2"SWT)**	6.45

** 1/2 Swt = 5/8 O.D.

SWIVEL - FGH X MALE PIPE



Part #	Size	List Price
30-048	3/4" x 3/8"	5.10
30-049	3/4" x 1/2"	6.81

BRASS FITTINGS

RIGID - MGH x FEMALE PIPE



Part #	MGH X Female NPTF	List Price
30-068	3/4" x 1/2"	3.40
30-073	3/4" x 3/4"	4.20

RIGID - MGH x MALE PIPE



Part #	MGH X Male NPTF	List Price
30-053	3/4" x 3/8"	3.73
30-058	3/4" x 1/2"	3.78
30-063	3/4" x 3/4" x 1/2"	4.46
300-63S	3/4" x 3/4" Short	3.56

RIGID - MGH x MGH



Part #	MGH X MGH	List Price
30-098	3/4" x 3/4" (1/2" FIP)	4.88

GARDEN HOSE WASHER



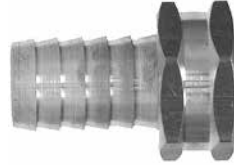
Part #	Size	List Price
30-150	black	0.21
30-150R	red	0.19

GARDEN HOSE CAP - BRASS



Part #	Size	List Price
30-103	3/4" Die Cast	1.62

FEMALE SWIVEL ONLY



Part #	Hose Barb x FGH	List Price
30-033	5/8" x 3/4"	4.91
30-034	3/4" x 3/4"	5.16

MALE END ONLY



Part #	Hose Barb x MGH	List Price
30-041	5/8" x 3/4"	4.17
30-042	3/4" x 3/4"	4.09

MALE END ONLY



Part #	Size	List Price
30-160	3/4"	3.48

BRASS NOZZLE BRASS NOZZLE



Part #	Size	List Price
30-637	3/4"	6.67

4" CROSSED PATTERN BRASS



Part #	Size	List Price
30-638	3/4"	12.34

BRASS GARDEN HOSE

LEAD FREE NOZZLE



Part #	Size	List Price
30-600	5-1/2"	16.77

Zinc Alloy spray nozzle with insulated handle soft grip and front thread protector

LEAD FREE NOZZLE



Part #	Size	List Price
30-609	5-1/4"	17.71

Zinc Alloy spray nozzle with easily adjustable brass head and plastic grip

PLASTIC SPRAY NOZZLE



Part #	Size	List Price
30-630	4-1/2"	3.31

QUICK DISCONNECT GARDEN HOSE COUPLERS



Part #	Size	List Price
30-450	Complete	15.69

BRASS FLARE**SAE 45° FLARE****SHORT ROD NUT**

Part #	Thread Size UNF	List Price
10-016	5/16"	2.25
10-017	3/8"	2.30
10-019	1/2"	2.95

LONG ROD NUT

Part #	Thread Size UNF	List Price
10-003	1/4"	2.29
10-005	3/8"	4.09
10-006	1/2"	8.33

FLARED PLUG

Part #	Thread Size UNF	List Price
10-064	1/4"	1.81
10-065	5/16"	5.00
10-066	3/8"	2.12
10-067	1/2"	3.62

SHORT ROD NUT

Part #	Thread Size UNF	List Price
10-075	1/4"	0.77
10-077	3/8"	1.80
10-078	1/2"	1.97
10-079	5/8"	2.94

UNION

Part #	Thread Size UNF	List Price
10-107	5/16"	4.37
10-108	3/8"	4.37
10-109	1/2"	6.11
10-110	5/8"	10.90

UNION TEE

Part #	Thread Size UNF	List Price
10-161	3/8"	6.64

UNION TEE

Part #	Male Flare x Male NPT (1&2)x3	List Price
10-211	3/8" x 3/8"	8.49

BRASS FITTINGS**MALE ADAPTER**

Part #	Male Flare x Male NPTF	List Price
10-255	1/4" x 1/8"	1.22
10-256	1/4" x 1/4"	1.60
10-257	1/4" x 3/8"	2.44
10-260	5/16" x 1/4"	2.80
10-262	3/8" x 1/8"	2.13
10-263	3/8" x 1/4"	2.29
10-264L	3/8" x 3/8"	2.89
10-264	3/8" x 3/8"	2.70
10-265	3/8" x 1/2"	5.83
10-267	1/2" x 1/4"	3.55
10-268	1/2" x 3/8"	3.65
10-269L	1/2" x 1/2"	3.47
10-269	1/2" x 1/2"	5.12
10-273	5/8" x 1/2"	8.05
10-274	5/8" x 3/4"	5.70
10-276	3/4" x 3/4"	8.46

90° MALE ELBOW

Part #	Male Flare x Male NPTF	List Price
10-296	3/8" x 1/2"	5.23
10-298	1/2" x 1/4"	5.06
10-286	1/4" x 1/8"	3.30
10-287	1/4" x 1/4"	3.00
10-291	5/16" x 1/4"	5.36
10-294	3/8" x 1/4"	3.52
10-294B*	3/8" x 1/4"	6.00
10-295	3/8" x 3/8"	3.66
10-298	1/2" x 1/4"	5.06
10-299	1/2" x 3/8"	5.02
10-299B*	1/2" x 3/8"	8.02
10-300	1/2" x 1/2"	5.80
10-300B*	1/2" x 1/2"	11.71
10-303	5/8" x 1/2"	7.81

BRASS FITTINGS

BRASS

BRASS - COMPRESSION

BRASS SLEEVE



Part #	Size	List Price
18-003	1/4"	0.24
18-004	5/16"	0.19
18-005	3/8"	0.23

UNION



Part #	Size	List Price
18-066	3/8"	3.38

TEE



Part #	Size	List Price
18-105	3/8"	6.27

UNION ELBOW



Part #	Size	List Price
18-126	3/8"	6.00

MALE ADAPTER



Part #	Comp. X Male NPTF	List Price
18-176	1/8" x 1/8"	2.13
18-177	3/16" x 1/8"	2.04
18-179	1/4" x 1/8"	1.91
18-180	1/4" x 1/4"	3.11
18-184	5/16" x 1/4"	3.11
18-188	3/8" x 1/4"	3.38
18-189	3/8" x 3/8"	4.35

DRAIN COCKS

INTERNAL SEAT



Part #	Male Pipe	List Price
46-075	1/4"	6.00

RADIATOR TYPE



Part #	Male Pipe	List Price
46-085	1/8"	3.43
46-086	1/4"	3.43

TEE HANDLE-INTERNAL SEAT



Part #	Male Pipe	List Price
46-081	1/4"	11.75

3-WAY VALVES

M-108-MID W/ CLICK 360°



Part #	A-B-C Female Pipe Thread	Length of Stem	List Price
46-251	1/4	1-3/8"	36.35
46-252	3/8	1-3/8"	42.78

M-114-MID W/ LESS CLICK

46-248	3/8	1-3/8"	42.08
--------	-----	--------	-------

M-114-MID W/ CLICK 360°



Part #	A-B-C Female Pipe Thread	Length of Stem	List Price
46-255	1/4	1-3/8"	39.50

M-108-MID W/ CLICK 360°



Part #	A-B-C Female Pipe Thread	Length of Stem	List Price
46-244	1/4	1-3/8"	38.96

SOLID BOTTOM VALVES

O-RING SEALED MIP x FIP



Part #	Size	List Price
46-401	1/4	26.78
46-402	3/8	29.60

O-RING SEALED MIP x FIP



Part #	Size	List Price
46-411	1/4	31.71

FUEL VALVES

PIPE MALE x FEMALE



Part #	Size	List Price
46-401M	1/4 x 1/4	36.40

PIPE FEMALE x FEMALE



Part #	Size	List Price
46-411M	1/4 x 1/4	43.79

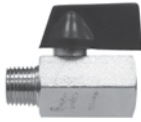
PIPE FEMALE x FEMALE



Part #	Size	List Price
46-429M	1/4 x 3/8	41.00

BRASS VALVES**MINIATURE BALL VALVES****U.L. TWO WAY VALVES**

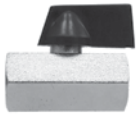
Part #	Size	List Price
46-443	1/4 x 1/4	25.97

**MALE X FEMALE**

Part #	Size	List Price
46-931	1/4	7.56
46-932	3/8	7.11

STAINLESS STEEL

46-933SS	1/2"	24.56
----------	------	-------

**FEMALE X FEMALE**

Part #	Size	List Price
46-935	1/4	7.56
46-936	3/8	8.27

MINI BALL VALVES**MALE X FEMALE**

Part #	Size	List Price
46-903 I	1/4	14.84
46-904 I	3/8	14.84
46-905 I	1/2	16.45

FEMALE X FEMALE

46-923I	3/8"	15.16
46-924I	1/2"	17.52

MARINE**ANTI-SIPHON VALVES**

Part #	Size	List Price
46-520	1/4 x 1/4	18.56

ANTI-SIPHON VALVES

Part #	Size	List Price
46-530	5/16 x 1/4	17.93
46-531	3/8 x 1/4	16.37
46-532	3/8 x 3/8	30.05

FULL PORT 600WOG

Part#	Size	List Price
	NPT	
940-171	1/4"	9.08
940-172	3/8"	9.08
940-173	1/2"	10.89
940-174	3/4"	15.95
940-175	1"	24.82
940-176	1-1/4"	36.53
940-177	1-1/2"	54.16
940-178	2"	84.72

600WOG 3 WAY BALL VALVE

Part#	Size	List Price
940-461	1/2"	35.20
940-462	3/4"	57.18

FULL PORT BRASS GATE

Part#	Size	List Price
940-132	1/2	15.13
940-133	3/4	20.33
940-134	1	27.86
940-135	1-1/4	50.50
940-136	1-1/2	64.64
940-137	2	85.05

BRASS FITTINGS**BRASS SWING CHECK**

Part #	Size	List Price
940-352	1/2	17.25
940-353	3/4	19.41
940-354	1	27.81
940-355	1-1/4	43.88
940-356	1-1/2	60.54
940-357	2	90.90
940-358	2-1/2	171.93

BRASS CHECK VALVES

Part#	Size	List Price
944-428	1/4"	17.97
944-429	3/8"	21.04
944-430	1/2"	16.49
944-431	3/4"	24.51
944-432	1"	32.85
944-433	1-1/4"	47.91
944-434	1-1/2"	59.15
944-435	2"	92.54

STAINLESS STEEL**TWO PIECE FULL PORT**

Part#	Size	List Price
949-161	1/4"	57.03
949-162	3/8"	47.93
949-163	1/2"	64.71
949-164	3/4"	68.66

WHITE PVC BALL VALVES**MOLDED IN PLACE****WHITE PIPE THREADS**

Part#	Size	List Price
940-284	1/2"	4.61
940-285	3/4"	7.37
940-286	1"	10.36
940-288	1-1/2"	18.16

RED BRASS NIPPLES

BRASS NIPPLES



Part #	Size	List Price
40-001	1/8" x Close (3/4")	3.97
40-002	1/8" x 1-1/2"	4.49
40-003	1/8" x 2"	4.81
40-005	1/8" x 3"	5.89
40-011	1/8" x 6"	10.12
40-020	1/4" x Close (7/8")	4.63
40-021	1/4" x 1-1/2"	5.36
40-022	1/4" x 2"	6.07
40-023	1/4" x 2-1/2"	6.58
40-024	1/4" x 3"	7.72
40-026	1/4" x 4"	9.88
40-040	3/8" x Close (1")	4.81
40-041	3/8" x 1-1/2"	5.69
40-042	3/8" x 2"	6.91
40-043	3/8" x 2-1/2"	7.48
40-044	3/8" x 3"	9.16
40-046	3/8" x 4"	11.76
40-060	1/2" x Close (1-1/8")	6.40
40-061	1/2" x 1-1/2"	7.41
40-062	1/2" x 2"	8.71
40-063	1/2" x 2-1/2"	10.36
40-064	1/2" x 3"	12.17
40-066	1/2" x 4"	15.91
40-067	1/2" x 4-1/2"	17.28
40-068	1/2" x 5"	19.03
40-070	1/2" x 6"	23.17
40-080	3/4" x Close (1- 3/8")	9.24
40-081	3/4" x 1-1/2"	9.85
40-082	3/4" x 2"	11.63
40-083	3/4" x 2-1/2"	13.49
40-084	3/4" x 3"	15.55
40-086	3/4" x 4"	20.31
40-090	3/4" x 6"	29.65
40-100	1" x Close (1-1/2")	13.62
40-101	1" x 2"	16.81
40-102	1" x 2-1/2"	19.61
40-103	1" x 3"	22.57
40-104	1" x 3-1/2"	26.14
40-105	1" x 4"	29.41
40-109	1" x 6"	43.30
40-120	1-1/4" x Close (1-5/8")	20.55
40-121	1-1/4" x 2"	23.47
40-122	1-1/4" x 2-1/2"	26.54
40-123	1-1/4" x 3"	31.42
40-124	1-1/4" x 3-1/2"	36.76
40-125	1-1/4" x 4"	41.37
40-129	1-1/4" x 6"	60.37
40-140	1-1/2" x Close (1-3/4")	26.73

BRONZE FITTINGS

Part #	Size	List Price
40-141	1-1/2" x 2"	28.75
40-142	1-1/2" x 2-1/2"	34.44
40-143	1-1/2" x 3"	39.58
40-145	1-1/2" x 4"	51.56
40-147	1-1/2" x 5"	64.10
40-149	1-1/2" x 6"	76.19
40-160	2" x Close (2")	40.70
40-162	2" x 3"	50.71
40-164	2" x 4"	66.33
40-168	2" x 6"	97.93
40-180	2-1/2" x Close (2-1/2")	107.40
40-200	3" x Close (2-5/8")	146.05

BRONZE FITTINGS

90° ELBOWS



Part #	Size	List Price
44-100	1/8"	6.52
44-101	1/4"	6.52
44-102	3/8"	6.52
44-103	1/2"	9.92
44-104	3/4"	13.34
44-105	1"	20.60
44-106	1-1/4"	32.76
44-107	1-1/2"	40.91
44-108	2"	66.61
44-109	2-1/2"	130.64

90° REDUCING ELBOWS

Part #	Size	List Price
44-127	3/4" x 1/2"	14.61
44-131	1" x 3/4"	25.65

90° STREET ELLS



Part #	Size	List Price
44-160	1/8"	9.92
44-161	1/4"	9.92
44-162	3/8"	9.92
44-163	1/2"	12.32
44-164	3/4"	17.40
44-165	1"	26.37
44-166	1-1/4"	44.04
44-167	1-1/2"	57.38
44-168	2"	97.28
44-169	2-1/2"	153.80
44-170	3"	230.67

BRASS

BRASS NIPPLES**45° STREET ELLS**

Part #	Size	List Price
44-180	1/8"	7.15
44-181	1/4"	7.15
44-183	1/2"	9.06
44-184	3/4"	13.34
44-185	1"	22.56
44-186	1-1/4"	36.06
44-187	1-1/2"	45.19
44-188	2"	73.25

45° STREET ELBOWS

Part #	Size	List Price
44-203	1/2"	12.32
44-204	3/4"	24.24
44-205	1"	28.77
44-206	1-1/4"	44.04
44-207	1-1/2"	59.16
44-208	2"	100.27

TEES

Part #	Size	List Price
44-250	1/8"	9.06
44-251	1/4"	9.06
44-252	3/8"	9.06
44-253	1/2"	11.41
44-254	3/4"	16.41
44-255	1"	29.17
44-256	1-1/4"	40.91
44-257	1-1/2"	56.29
44-258	2"	92.20

CROSSES

Part #	Size	List Price
44-393	1/2"	18.41
44-394	3/4"	26.60

COUPLINGS

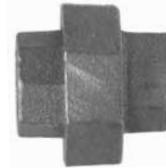
Part #	Size	List Price
44-410	1/8"	6.52
44-411	1/4"	6.52
44-412	3/8"	6.52
44-413	1/2"	8.20
44-414	3/4"	10.81
44-415	1"	16.41
44-416	1-1/4"	25.65
44-417	1-1/2"	34.87
44-418	2"	57.38

REDUCING COUPLINGS

Part #	Size	List Price
44-430	1/4" x 1/8"	7.00
44-432	3/8" x 1/4"	7.00
44-434	1/2" x 1/4"	8.72
44-435	1/2" x 3/8"	8.72
44-437	3/4" x 3/8"	12.99
44-438	3/4" x 1/2"	12.99
44-441	1" x 1/2"	21.60
44-442	1" x 3/4"	21.60
44-445	1-1/4" x 3/4"	34.87
44-446	1-1/4" x 1"	34.87
44-449	1-1/2" x 1"	44.04
44-450	1-1/2" x 1-1/4"	44.04
44-454	2" x 1-1/2"	65.46
44-463	3" x 2-1/2"	153.69

BRASS FITTINGS**CAPS**

Part #	Size	List Price
44-470	1/8"	4.88
44-471	1/4"	4.88
44-472	3/8"	4.88
44-473	1/2"	6.52
44-474	3/4"	8.62
44-475	1"	13.51
44-476	1-1/4"	20.54
44-477	1-1/2"	27.73
44-478	2"	47.06

UNIONS

Part #	Size	List Price
44-603	1/2"	25.15
44-604	3/4"	34.87
44-605	1"	46.18
44-606	1-1/4"	67.64
44-607	1-1/2"	79.82
44-608	2"	122.85

BRONZE FITTINGS

HEX BUSHINGS



Part #	Size	List Price
44-500	1/4" x 1/8"	4.41
44-501	3/8" x 1/8"	4.41
44-502	3/8" x 1/4"	4.41
44-503	1/2" x 1/8"	6.18
44-504	1/2" x 1/4"	5.19
44-505	1/2" x 3/8"	5.19
44-507	3/4" x 1/4"	8.62
44-508	3/4" x 3/8"	7.15
44-509	3/4" x 1/2"	7.15
44-510	1" x 1/4"	13.12
44-512	1" x 1/2"	10.81
44-513	1" x 3/4"	10.81
44-516	1-1/4" x 1/2"	22.23
44-517	1-1/4" x 3/4"	18.41
44-518	1-1/4" x 1"	18.41
44-521	1-1/2" x 1/2"	28.77
44-522	1-1/2" x 3/4"	28.77
44-523	1-1/2" x 1"	23.52
44-524	1-1/2" x 1-1/4"	23.52
44-529	2" x 1"	42.00
44-530	2" x 1-1/4"	34.87
44-531	2" x 1-1/2"	34.87
44-535	2-1/2" x 2"	69.71
44-539	3" x 2-1/2"	105.41

BRONZE COUNTERSUNK



Part #	Size	List Price
44-633	1/2"	5.34
44-634	3/4"	6.12
44-635	1"	11.43

CORED SQUARE HEAD PLUGS



Part #	Size	List Price
44-650	1/8"	4.88
44-651	1/4"	4.88
44-652	3/8"	4.88
44-653	1/2"	6.82
44-654	3/4"	7.81
44-655	1"	10.30
44-656	1-1/4"	15.32
44-657	1-1/2"	19.54
44-658	2"	30.84

SOLID SQUARE HEAD PLUGS



Part #	Size	List Price
44-670	1/8"	5.19
44-671	1/4"	5.19
44-672	3/8"	4.33
44-673	1/2"	8.20
44-674	3/4"	10.69
44-675	1"	18.22
44-676	1-1/4"	32.82
44-677	1-1/2"	42.66
44-678	2"	67.64

HEX LOCKNUTS



Part #	Size	List Price
44-707	1-1/2"	19.43

HEX NIPPLES



Part #	Size	List Price
44-723	1/2"	12.95
44-724	3/4"	13.60
44-725	1"	14.66
44-726	1-1/4"	30.45
44-727	1-1/2"	46.52
44-728	2"	56.29

REDUCING HEX NIPPLES

Part #	Size	List Price
44-742	1/2" x 3/8"	11.25
44-743	3/4" x 1/2"	21.31

STAINLESS STEEL NIPPLES

STAINLESS NIPPLES



Part #	Length	List Price
304 S.S.		
48-020	1/4" x Close (7/8")	2.49
48-022	1/4" x 2"	3.70
48-024	1/4" x 3"	5.06
48-040	3/8" x Close (1")	2.98
48-042	3/8" x 2"	4.38
48-060	1/2" x Close (1")	3.84
48-061	1/2" x 1-1/2"	4.63
48-062	1/2" x 2"	5.55
48-080	3/4" x Close (1-3/8")	5.19
48-082	3/4" x 2"	6.62
48-084	3/4" x 3"	9.27
48-086	3/4" x 4"	11.93
48-100	1" x Close (1-1/2")	6.81
48-101	1" x 2"	8.54
48-103	1" x 3"	11.85
48-105	1" x 4"	15.27
48-109	1" x 6"	22.13
48-120	1-1/4" x Close (1-5/8")	9.16
48-129	1-1/4" x 6"	27.98
48-140	1-1/2" x 1-3/4"	11.21
48-145	1-1/2" x 4"	22.55
48-160	2" x Close (2")	17.41
48-164	2" x 4"	29.13
48-168	2" x 6"	42.50
48-180	2-1/2" x close 2-1/2"	35.30
48-200	3" x close 2-5/8"	49.67

Part #	Length	List Price
316 S.S.		
49-020	1/4" x close 7/8"	3.07
49-024	1/4" x 3"	6.72
49-044	3/8" x 3"	8.12
49-060	1/2" x close 1"	5.04
49-080	3/4" x close 1-3/8"	6.57

BRASS

STAINLESS STEEL FITTINGS

90° ELBOWS



Part # 304 S.S.	List Price	Size	Part # 316 S.S.	List Price
62-101	5.88	1/4"	63-101	7.54
62-102	7.30	3/8"	63-102	9.15
62-103	7.77	1/2"	63-103	10.11
62-104	11.16	3/4"	63-104	14.66
62-105	15.81	1"	63-105	18.40
62-106	27.74	1-1/4"	63-106	31.54
62-107	36.93	1-1/2"		
62-108	46.82	2"	63-108	53.19
62-109	106.67	2-1/2"		
62-110	135.91	3"		

90° STREET ELBOWS



Part # 304 S.S.	List Price	Size	Part # 316 S.S.	List Price
62-160	8.40	1/8"		
62-161	8.40	1/4"	63-161	10.29
62-162	10.11	3/8"	63-162	12.65
62-163	11.90	1/2"	63-163	14.88
62-164	16.51	3/4"	63-164	19.61
62-165	28.56	1"	63-165	31.31
62-166	41.48	1-1/4"		
62-167	49.07	1-1/2"	63-167	52.12
62-168	66.45	2"		

TEES



Part # 304 S.S.	List Price	Size	Part # 316 S.S.	List Price
62-251	7.89	1/4"		
62-252	10.05	3/8"	63-252	12.42
62-253	10.54	1/2"	63-253	13.09
62-254	16.78	3/4"	63-254	19.31
62-255	21.37	1"		
62-256	42.50	1-1/4"		
62-257	52.83	1-1/2"		

STAINLESS STEEL OD MACHINED



Part # 304 S.S.	List Price	Size
62-411B	4.78	1/4"
62-412B	6.13	3/8"
62-413B	6.60	1/2"
62-414B	9.14	3/4"

COUPLINGS



Part # 304 S.S.	List Price	Size
62-413	6.28	1/2"
62-414	9.07	3/4"
62-415	13.78	1"
62-416	44.19	1-1/4"
62-417	26.00	1-1/2"
62-418	36.65	2"
62-420	103.98	3"

CAPS



Part # 304 S.S.	List Price	Size
62-474	6.48	3/4"
62-475	9.73	1"

HEX BUSHINGS



Part # 304 S.S	List Price	Size	Part # 316 S.S.	List Price
62-500	3.83	1/4" x 1/8"		
62-502	4.19	3/8" x 1/4"	63-502	4.94
62-504	5.30	1/2" x 1/4"	63-504	5.80
62-505	5.30	1/2" x 3/8"	63-505	5.80
62-507	4.36	3/4" x 1/4"	63-507	8.62
62-508	7.75	3/4" x 3/8"		
62-509	7.75	3/4" x 1/2"	63-509	8.62
62-512	10.77	1" x 1/2"	63-512	12.31
62-513	10.77	1" x 3/4"	63-513	12.31
62-518	19.28	1-1/4" x 1"		
62-524	23.07	1-1/2" x 1-1/4"		
62-531	35.19	2" x 1-1/2"		
62-535	60.30	2-1/2" x 2"		
62-538	92.40	3" x 2"		

HEX SOCKET PLUGS



Part # 316 S.S	Size	List Price
63-761	1/4 "	4.50
63-762	3/8 "	6.34
63-763	1/2 "	10.57

HEX HEAD PLUGS



Part # 304 S.S	List Price	Size	Part # 316 S.S.	List Price
62-631	2.81	1/4"		
62-632	3.48	3/8"		
62-633	5.49	1/2"		

HEX NIPPLES



Part # 304 S.S	List Price	Size	Part # 316 S.S.	List Price
62-722	6.36	3/8"	63-722	7.13
62-721	5.39	1/4"	63-721	6.43
62-723	7.55	1/2"	63-723	8.44
62-724	9.28	3/4"	63-724	11.04
62-725	13.59	1"	63-725	15.19

SQUARE HEAD PLUGS



Part # 304 S.S	List Price	Size	Part # 316 S.S.	List Price
62-670	2.54	1/8"		
62-671	3.00	1/4"		
62-672	4.02	3/8"		
62-653	5.74	1/2"		
62-654	7.00	3/4"		

HOSE NIPPLES



Part # 304 S.S	List Price	Hose I.D. x Male Pipe	Part # 316 S.S.	List Price
73-951	6.38	1/4"	973-951	7.14
73-952	9.94	3/8"	973-952	10.16
73-953	11.92	1/2"	973-953	16.35
73-954	14.33	3/4"	973-954	18.89
73-956	27.73	1-1/4"	973-956	27.96
73-957	31.31	1-1/2"	973-957	48.61
73-958	44.31	2"	973-958	51.79
73-955	17.01	1"	973-955	20.58

REDUCING HOSE NIPPLES



Part # 304 S.S	Hose I.D. x Male Pipe	List Price
73-970	1/4" x 1/8"	6.50
73-971	3/8" x 1/4"	7.51
73-972	1/2" x 3/8"	11.22
73-975	1" x 3/4"	16.72
73-977	1-1/4" x 1"	26.93
73-973	1/2" x 1/4"	11.59
73-974	3/4" x 1/2"	14.81

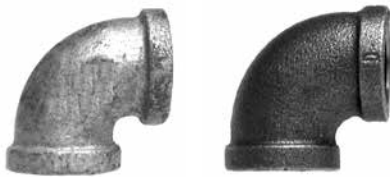
STEEL NIPPLES



Part # Galv	List Price	Length	Part # Black	List Price
		1/4" X Close (7/8")	57-020	1.62
56-040	2.31	3/8" x Close (1")		
56-042	2.76	3/8" x 2"		
56-060	1.40	1/2" x Close (1-1/8")		
56-080	1.87	3/4" x Close (1-3/8")	57-080	1.70
56-082	2.12	3/4" x 2"		
56-086	3.05	3/4" x 4"		
56-100	2.75	1" x Close (1-1/2")		
56-101	2.89	1" x 2"		
56-103	3.47	1" x 3"		
56-109	5.69	1" x 6"		
56-120	3.70	1-1/4" x Close (1-5/8")		
		1-1/4" x 3"	57-123	4.16
		1-1/4" x 4-1/2"	57-126	5.43
56-140	4.62	1-1/2" x Close (1-3/4")	57-140	3.96
56-143	5.59	1-1/2" x 3"		
56-160	6.30	2" x Close (2")		
56-164	9.84	2" x 4"		
56-200	22.49	3" x Close (2-5/8")		
		3" x 6"	57-207	31.01

MALLEABLE FITTINGS

90° ELBOWS



Part # Galv	List Price	Length	Part # Black	List Price
64-103	2.31	1/2"	65-103	1.94
64-104	3.08	3/4"	65-104	2.65
64-105	5.15	1"	65-105	4.24
64-106	8.68	1-1/4"	65-106	6.38
64-107	11.43	1-1/2"	65-107	8.48
64-108	17.36	2"	65-108	13.56
64-110	79.77	3"	65-110	43.90

90° STREET ELBOWS



Part # Galv	List Price	Length	Part # Black	List Price
64-163	5.05	1/2"	65-163	3.80
64-164	4.87	3/4"	65-164	3.65
64-165	6.64	1"	65-165	5.37
64-166	11.89	1-1/4"	65-166	8.18
64-167	14.63	1-1/2"	65-167	10.43
64-168	23.12	2"	65-168	17.69

TEES



Part # Galv	List Price	Length	Part # Black	List Price
64-251	4.67	1/4"	65-251	3.69
64-252	4.92	3/8"	65-252	3.69
64-253	2.93	1/2"	65-253	2.35
64-254	5.12	3/4"	65-254	3.49
64-255	7.58	1"	65-255	5.99

COUPLINGS



Part # Galv	List Price	Length	Part # Black	List Price
64-413	3.49	1/2"	65-413	3.94
64-414	4.07	3/4"	65-414	3.22
64-415	6.70	1"	65-415	4.90
64-416	9.21	1-1/4"	65-416	6.25
64-418	15.33	2"	65-418	11.43

REDUCING COUPLINGS



Part # Galvanized	Size	List Price
64-450	1-1/2" x 1-1/4"	7.92
64-454	2" x 1-1/2"	15.33
64-456	3" x 2"	61.28

STEEL SQUARE HEAD PLUGS

Part # Galvanized	Size	List Price
67-670	1/8"	0.50
67-671	1/4"	1.31
66-672	3/8"	0.95

STEEL HEX BUSHINGS



Part # Galvanized	List Price	Size M x F	Part # Black	List Price
66-500	1.32	1/4" x 1/8"	67-500	1.61
66-502	1.56	3/8" x 1/4"	67-502	2.11
66-504	2.43	1/2" x 1/4"	67-504	2.27
66-505	2.43	1/2" x 3/8"	67-505	2.27
66-507	4.18	3/4" x 1/4"	67-507	3.64

SQUARE HEAD PLUGS



Part # Galvanized	Size	List Price
64-653	1/2"	2.53
65-654	3/4"	1.68
65-655	1"	2.35
65-656	1-1/4"	3.60
67-670	1/8"	0.50
66-672	3/8"	0.95

HEX BUSHING



Part # Galvanized	List Price	Size M x F	Part # Black	List Price
64-505	5.65	1/2" x 3/8"		
64-509	5.26	3/4" x 1/2"		
64-512	5.69	1" x 1/2"	65-512	3.02
64-513	5.07	1" x 3/4"		
64-517	7.29	1-1/4" x 3/4"	65-517	4.24
64-518	7.29	1-1/4" x 1"		
64-522	10.62	1-1/2" x 3/4"	65-522	5.21
64-523	9.53	1-1/2" x 1"		
64-524	8.80	1-1/2" x 1-1/4"	65-524	4.98
64-530	11.64	2" x 1-1/4"	65-530	6.90
64-531	9.89	2" x 1-1/2"		

CAPS



Part # Galvanized	List Price	Size M x F	Part # Black	List Price
64-472	3.55	3/8"	65-472	1.93
64-473	2.72	1/2"		
64-474	3.90	3/4"		
64-475	4.32	1"		
64-476	6.27	1-1/4"		
64-477	7.99	1-1/2"		
64-478	10.10	2"		

BRASS FITTINGS

PLASTIC - PIPE

WHITE NYLON PIPE FITTINGS
HEX HEAD PLUGS

white nylon

Part #	Size	List Price
28-603W	3/8"	0.92
28-604W	1/2"	2.02
28-605W	3/4"	1.18
28-606W	1"	1.86

PIPE CAP



white nylon

Part #	Size	List Price
28-642W	1/2"	1.12
28-643W	3/4"	1.08

HEX NIPPLES



white nylon

Part #	Size	List Price
28-614W	1/2"	1.10
28-615W	3/4"	1.36
28-616W	1"	2.38
28-618W	1 1/2"	

REDUCER NIPPLES

white
nylon

Part #	Size	List Price
28-623W	1/2" x 1/4"	1.17
28-625W	3/4 x 1/2"	1.32

HEX BUSHING



Part #	Size	List Price
28-663W	1/2 x 1/4"	1.98
28-664W	1/2 x 3/8"	2.48
28-667W	3/4 x 3/8"	2.63
28-668W	3/4 x 1/2"	2.09
28-671W	1 x 1/2"	3.07
28-672W	1 x 3/4"	2.42
28-674W	1-1/4 x 3/4"	4.64
28-675W	1-1/4 x 1"	4.08
28-678W	1-1/2 x 3/4"	5.38
28-679W	1-1/2 x 1"	5.92
28-680W	1-1/2 x 1-1/4"	4.52

ELBOW



Part #	Size	List Price
28-702P	3/8"	9.30
28-703W	1/2"	6.72
28-704W	3/4"	7.61
28-705W	1"	13.48
28-706W	1-1/4"	15.27
28-707W	1-1/2"	17.57

STREET ELBOW



Part #	Size	List Price
28-724W	3/4"	6.89

TEE



Part #	Size	List Price
28-743W	1/2"	8.15

COUPLING



Part #	Size	List Price
28-761W	1/4"	6.16
28-762W	3/8"	6.78
28-763W	1/2"	5.70
28-764W	3/4"	5.84
28-765W	1"	7.36
28-767W	1-1/2"	10.01
28-768W	2"	12.37

MALE ADAPTERS



Part #	Size	List Price
33-012W	3/8 x 1/4"	1.36
33-013W	3/8 x 3/8"	1.01
33-014W	3/8 x 1/2"	1.11
33-015W	1/2 x 1/4"	0.89
33-016W	1/2 x 3/8"	0.97
33-017W	1/2 x 1/2"	0.99
33-017B	1/2 x 1/2"	0.91
33-018W	1/2 x 3/4"	1.53
33-019W	5/8 x 3/8"	0.85
33-020W	5/8 x 1/2"	1.27
33-020B	5/8 x 1/2"	0.90
33-021W	5/8 x 3/4"	1.46
33-021B	5/8 x 3/4"	1.09
33-022W	3/4 x 1/2"	1.41
33-022B	3/4 x 1/2"	0.94
33-023W	3/4 x 3/4"	1.39
33-023B	3/4 x 3/4"	1.11
33-000W	3/4 x 1"	1.80
33-024W	1 x 3/4"	1.57
33-025W	1 x 1"	2.05
33-029W	1 x 1-1/4"	3.99
33-028W	1-1/4 x 1"	3.10
33-030W	1-1/4 x 1-1/4"	3.60
33-032W	1-1/4 x 1-1/2"	3.28
33-033W	1-1/2 x 1-1/2"	4.09
33-035W	2 x 2"	7.01

B = BLACK POLYETHYLENE
W = WHITE NYLON

PLASTIC FITTINGS

ELBOWS



Hose ID x Male Pipe

Part #	Size	List Price
33-047W	3/8 x 1/2	1.74
33-384W	3/8 x 3/4	2.35
33-043W	1/2 x 3/8	1.66
33-311W	1/2 x 1/2	1.65
33-311B	1/2 x 1/2	1.42
33-385W	1/2 x 3/4	2.16
33-045W	5/8 x 1/2	2.17
33-312W	5/8 x 3/4	2.42
33-313W	3/4 x 1/2	2.21
33-313B	3/4 x 1/2	2.34
33-314W	3/4 x 3/4	2.18
33-314B	3/4 x 3/4	2.43
33-315W	3/4 x 1	2.40
33-316W	1 x 1	2.73
33-460W	1 x 1-1/4	4.70
33-461W	1-1/4 x 1-1/4	5.34
33-463W	1-1/2 x 1-1/2	6.73
33-464W	2 x 2	8.23

HOSE BARB x FE ADAPTER



Part #	Size	List Price
33-058W	3/8 x 1/4"	1.92
33-061W	1/2 x 1/2"	3.79
33-063W	5/8 x 3/4"	5.93
33-064W	3/4 x 1/2"	4.64
33-065W	3/4 x 3/4"	15.97

ALL HOSE BARB "Y"



Part #	Size	List Price
33-300P	1/4"	7.08
33-301W	3/8"	3.45
33-301P	3/8"	4.19
33-302P	1/2"	7.85

UNION ELBOWS



Part #	Size	List Price	
		B	W
33-391	3/8	1.77	1.59
33-394	1/2	1.37	1.59
33-395	5/8	0.76	2.10
33-396	3/4	2.05	2.11
33-397	1		3.13
33-398	1-1/4		9.10
33-399	1-1/2		11.95
33-389	2		18.83

SPLICERS



Part #	Size	List Price	
		B	W
33-093	1/4	0.70	0.82
33-094	5/16		1.11
33-095	3/8		0.80
33-096	1/2	0.72	0.86
33-097	5/8	0.97	1.07
33-098	3/4	2.34	1.56
33-099	1		2.24
33-480	1-1/4		4.07
33-481	1-1/2		4.05
33-482	2		15.16

REDUCER CONNECTORS

Part #	Size	List Price	
		B	W
33-407	1/2 x 1/4		0.83
33-408	1/2 x 3/8		0.92
33-409	5/8 x 3/8		1.07
33-410	5/8 x 1/2	0.78	1.02

REDUCING TEES

Part #	Size 3 x 1 x 2	List Price	
		B	W
33-435	1/2 x 3/4 x 3/4		2.50

TEES BARBED ON ALL SIDES



Part #	Size	List Price	
		B	W
33-422	1/4		1.76
33-429	3/8	1.33	1.53
33-433	1/2	1.37	1.77
33-436	5/8		1.80
33-437	3/4	1.77	2.05
33-438	1		3.51
33-439	1-1/4		5.53
33-440	1-1/2		6.13

BRONZE

HEX MALE ADAPTERS FOR PL. PIPE



Part #	Barb x Male	List Price
973-927	1" x 1"	29.89
973-928	1-1/4" x 1-1/4"	28.18
973-929	1-1/4" x 1"	27.89
973-948	1-1/2" x 1-1/2"	36.35

TEFLON TAPE



Part #	Size	List Price
982-107	1/2" x 260"	1.34
982-108	1/2" x 520"	1.50

67-5
63
HSS
HF-SS
035
HAS-X
300

1/2" WIDE BAND CLAMPS (12.70mm)

- 60mm Thickness
- Use for marine, underground and other high corrosive applications.



620 Series

- 5/16" Hex Slotted 305 Stainless Steel Screw
- 1/2" Wide 301 Stainless Steel Band
- 301 Stainless Steel Housing

620SS Series

- 5/16" Hex Slotted 316 Stainless Steel Screw
- 1/2" Wide 316 Stainless Steel Band
- 316 Stainless Steel Housing

#	Part #	List Price	Dia. Range		All 316SS Part #	List Price
			Min.	Max.		
6	620-006	1.71	3/8"	7/8"	620-006SS	1.59
8	620-008	1.93	7/16"	1"	620-008SS	1.62
10	620-010	1.93	9/16"	1-1/16"	620-010SS	1.67
12	620-012	2.34	9/16"	1-1/4"	620-012SS	1.73
16	620-016	1.95	11/16"	1-1/2"	620-016SS	1.82
20	620-020	1.97	3/4"	1-3/4"	620-020SS	1.90
24	620-024	1.76	1-1/16"	2"	620-024SS	2.02
28	620-028	1.77	1-5/16"	2-1/4"	620-028SS	2.13
32	620-032	1.90	1-9/16"	2-1/2"	620-032SS	2.22
36	620-036	1.96	1-13/16"	2-3/4"	620-036SS	2.31
40	620-040	2.56	2-1/16"	3"	620-040SS	2.42
44	620-044	3.16	2-5/16"	3-1/4"	620-044SS	2.51
48	620-048	2.44	2-9/16"	3-1/2"	620-048SS	2.63
52	620-052	2.54	2-13/16"	3-3/4"	620-052SS	2.71
56	620-056	2.54	3-1/16"	4"	620-056SS	2.83
60	620-060	4.38	3-5/16"	4-1/4"	620-060SS	2.89
64	620-064	2.68	2-1/2"	4-1/2"	620-064SS	2.89
72	620-072	2.82	3"	5"	620-072SS	3.17
80	620-080	4.62	3-1/2"	5-1/2"		
88	620-088	3.21	4"	6"		
96	620-096	4.48	4-1/2"	6-1/2"		
104	620-104	3.50	5"	7"		
116	620-116	7.50	5-3/4"	7-3/4"		
128	620-128	4.85	6-1/2"	8-1/2"		
152	620-152	6.73	2"	10"		

CLAMPS

350 Series

- 1/4" Hex Slotted 410 Stainless Steel Screw
- 5/16" Wide 301 Stainless Steel Band
- 301 stainless Steel Housing
- 6mm thick



350SS Series

- 1/4" Hex Slotted 316 Stainless Steel Screw
- 316 Stainless Steel Band
- 8mm wide
- 60 mm thick
- 316 stainless Steel Housing



Part #	List Price	Dia. Range		Part #	List Price
		Min.	Max.		
350-004	0.96	7/32"	5/8"	350-004SS	0.72
350-005	1.72	7/16"	11/16"	350-005SS	0.75
350-006	0.96	5/16"	7/8"	350-006SS	0.78
350-008	1.08	7/16"	1"	350-008SS	0.84
350-010	1.36	1/2"	1-1/16"	350-010SS	0.84
350-012	1.36	9/16"	1-1/4"	350-012SS	0.89
350-016	2.07	11/16"	1-1/2"	350-016SS	0.95
350-020	1.85	7/8"	1-3/4"	350-020SS	1.01

T-Bolt Clamps

- All designs meet SAE J1508 specifications.
- .025” Band Thickness
- 3/4” Wide Band
- Band Material: 301 Series Stainless Steel
- Bolt Material: 304 Series Stainless Steel
- Nut Material: 304 Series Stainless Steel
- Nuts are Self-locking
- Torque Rating 75 in/lb



Purpose: To provide a quick, yet effective means of clamping a variety of fittings to a wide range of hose. T-Bolts can be applied with a standard 7/16” socket wrench. They provide 360° sealing surface by using a shoe or formed bridge.

Services: The T-Bolt clamp is a high strength, reliable clamp with numerous applications in both the commercial and industrial markets including hose and ductwork connections for air, oil, water and other types of low pressure fluid lines.

Opens 1/16" above and tightens 1/8" smaller than nominal I.D. for a total of 3/16" range for clamps sizes 150 through 250. Opens 1/16" above and tightens 7/32" smaller than nominal I.D. for clamps sizes 256 through 750.

Send Midland all your high volume quotes!

30010

Nominal Size	O.D. Range		Part#	List Price
	From:	To:		
1-1/4	1-5/32"	1-15/32"	840-131	5.06
1-1/2	1-3/8"	1-9/16"	840-150	4.63
1-3/4	1-5/8"	1-13/16"	840-175	4.40
1-7/8	1-3/4"	1-15/16"	840-188	4.80
2	1-7/8"	2-1/16"	840-200	4.88
2-1/4	2-1/8"	2-5/16"	840-225	5.67
2-3/8	2-1/4"	2-7/16"	840-238	4.84
2-1/2	2-3/8"	2-9/16"	840-250	4.73
2-9/16	2-11/32"	2-5/8"	840-256	6.77
2-5/8	2-13/32"	2-11/16"	840-263	4.82
2-3/4	2-17/32"	2-13/16"	840-275	5.78
2-7/8	2-21/32"	2-15/16"	840-288	5.35
3	2-25/32"	3-1/16"	840-300	5.47
3-1/8	2-29/32"	3-3/16"	840-312	6.72
3-1/4	3-1/32"	3-5/16"	840-325	5.45
3-1/2	3-9/32"	3-9/16"	840-350	5.40
3-3/4	3-17/32"	3-13/16"	840-375	6.38
3-53/64	3-19/32"	3-7/8"	840-382	7.15
4	3-25/32"	4-1/16"	840-400	5.80
4-1/4	4-1/32"	4-5/16"	840-425	5.85
4-1/2	4-9/32"	4-9/16"	840-450	6.24
4-3/4	4-17/32"	4-13/16"	840-475	6.34
5	4-25/32"	5-1/16"	840-500	7.04
5-1/4	5-1/32"	5-5/16"	840-525	8.15
5-1/2	5-9/32"	5-9/16"	840-550	7.26
5-3/4	5-17/32"	5-13/16"	840-575	8.18
6	5-25/32"	6-1/16"	840-600	8.32
6-1/4	6-1/32"	6-5/16"	840-625	8.56
6-1/2	6-9/32"	6-9/16"	840-650	8.68
6-3/4	6-17/32"	6-13/16"	840-675	8.80
7	6-25/32"	7-1/16"	840-700	8.92
7-1/2	7-9/32"	7-9/16"	840-750	10.39
8	7-25/32"	8-1/16"	840-800	9.43
8-1/4	8-9/32"	8-9/16"	840-850	12.09
8-7/8	8-21/32"	8-15/16"	840-888	12.54

CLAMPS